

**FONTANA DAX DUAL HANDLE BATHROOM FREESTANDING FLOOR MOUNT BATHTUB FAUCET WITH HAND SHOWER AND TUB SPOUT IN ANTIQUE BRASS INSTALLATION INSTRUCTIONS**



**PRIOR TO INSTALLATION**

Please read installation instructions below. All plumbing should be installed in accordance with applicable building codes and regulations.

Unpack and inspect the items for any shipping damages. If you find damages, do not install.

All products must be installed by a professional and certified plumber otherwise warranty may be voided.

**POSSIBLE TOOLS REQUIRED\***



Plumbers Tape



Tape Measure



Level



Adjustable Wrench



Hex Wrench



Thread Sealant



Drill



Pencil or Marker

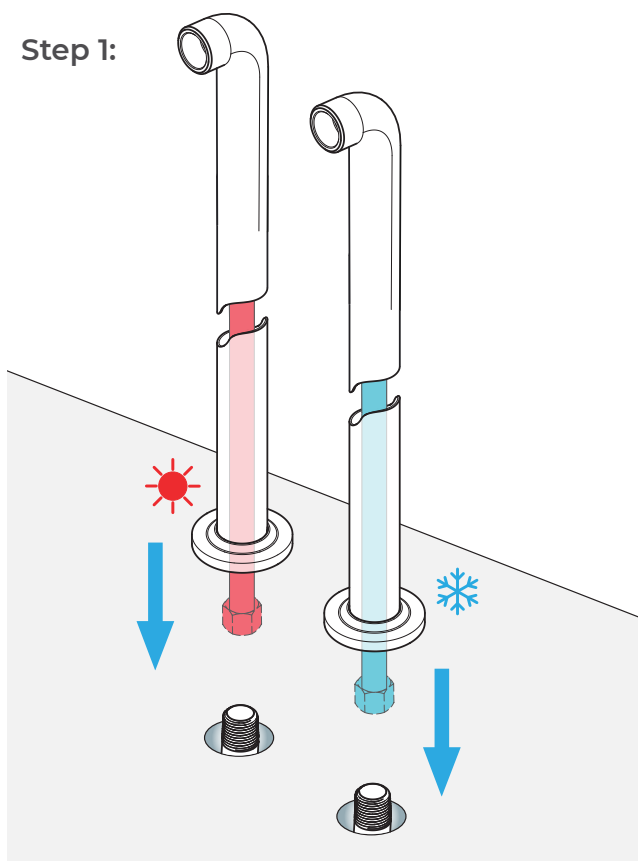


Screwdriver

\*not included

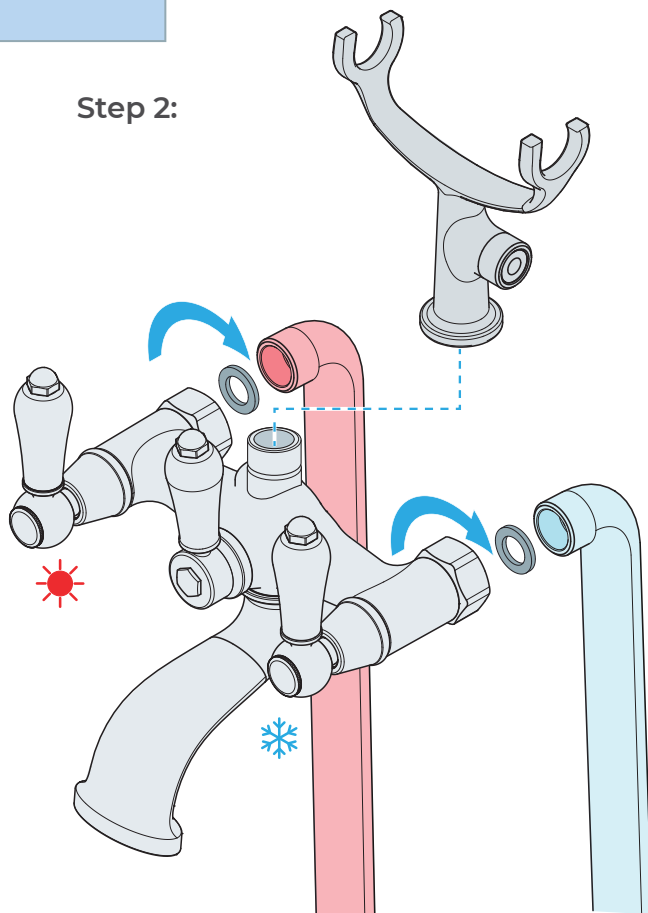
## Installations Instructions

Step 1:



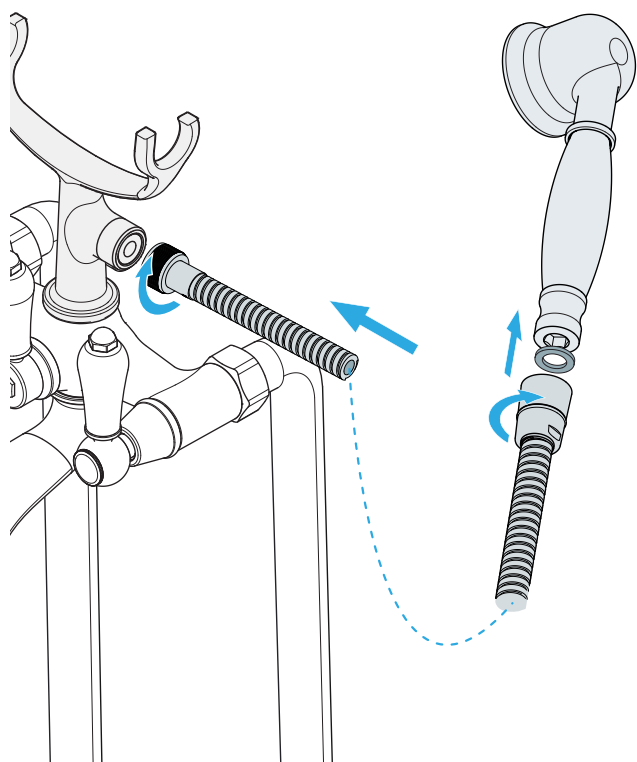
Insert the base cover plate and connect the shower legs to the Hot & Cold water supply lines.

Step 2:



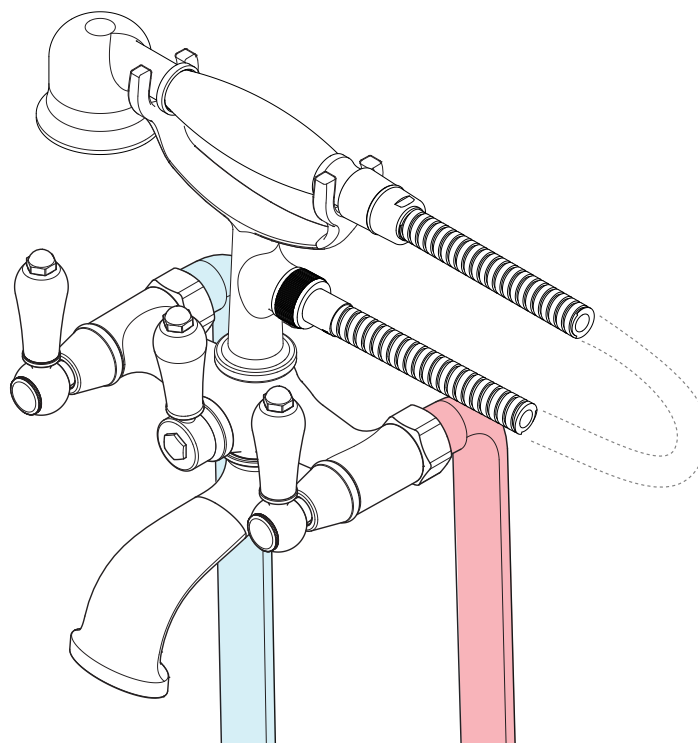
Connect the faucet body to the legs. And then connect the hand shower holder to the faucet body.

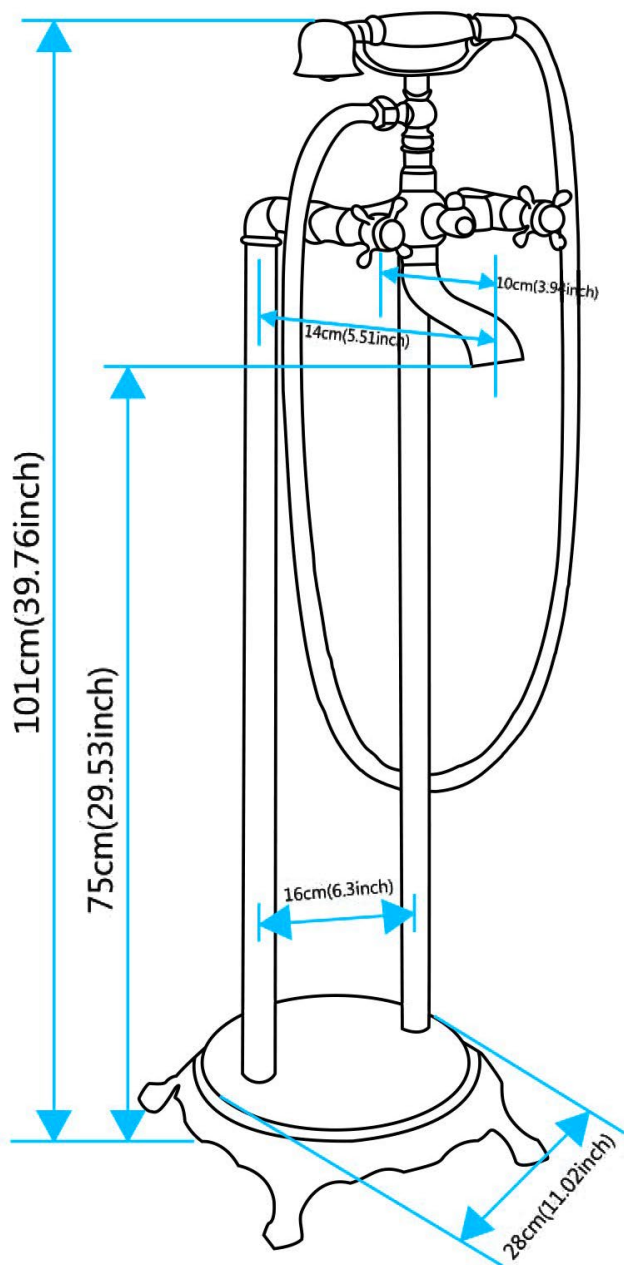
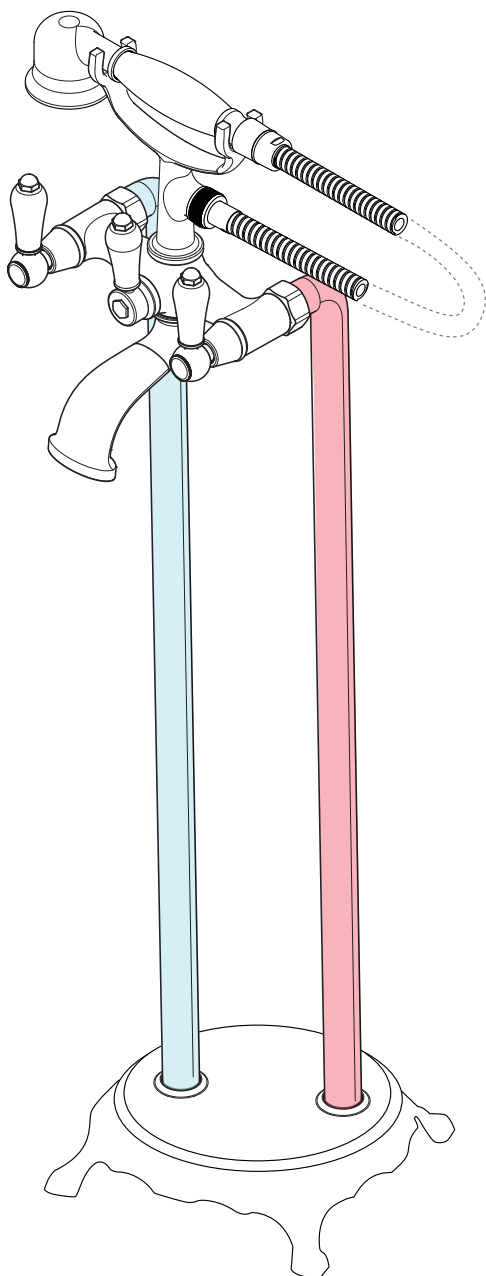
Step 3:



Connect the hand shower hose to the holder and hand shower.

Step 4:





**Specifications :**

- Feature: 2 holes
- Contemporary style
- Number of handles: Double handle
- Valve type: ceramic valve
- Faucet body material: brass
- Hand shower material: brass and ceramic
- Stainless steel shower hose: 150cm stainless steel
- Package includes: bathtub faucet + 2 pieces hot and cold hose
- Antique Brass Floor Mounted Bathtub Double Sink Faucet Bathroom Bath Shower Bathtub Mixer Faucet with Handshower

